

BRUNNER FIREPLACES



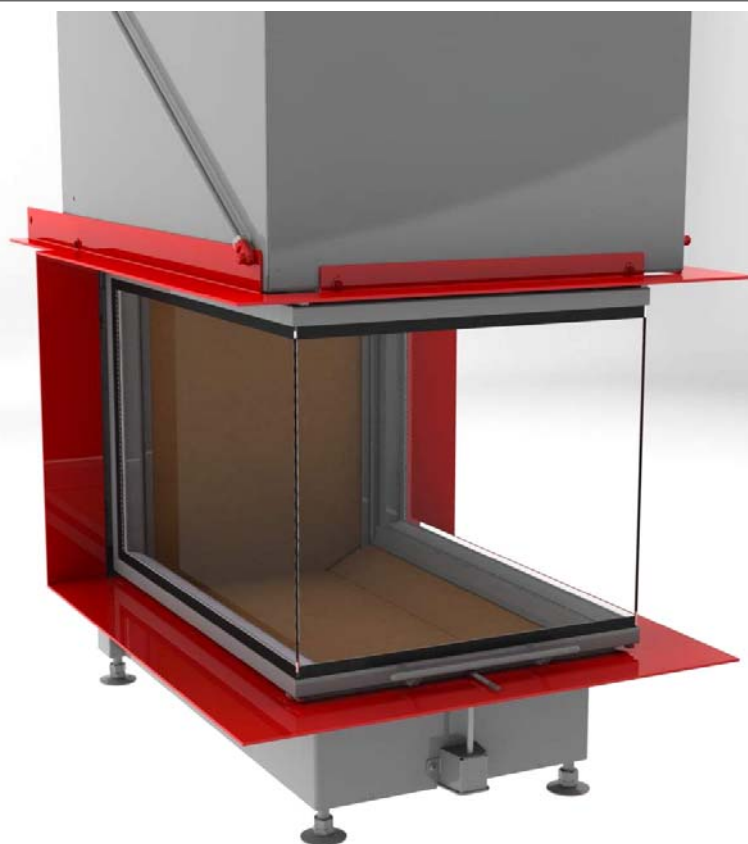
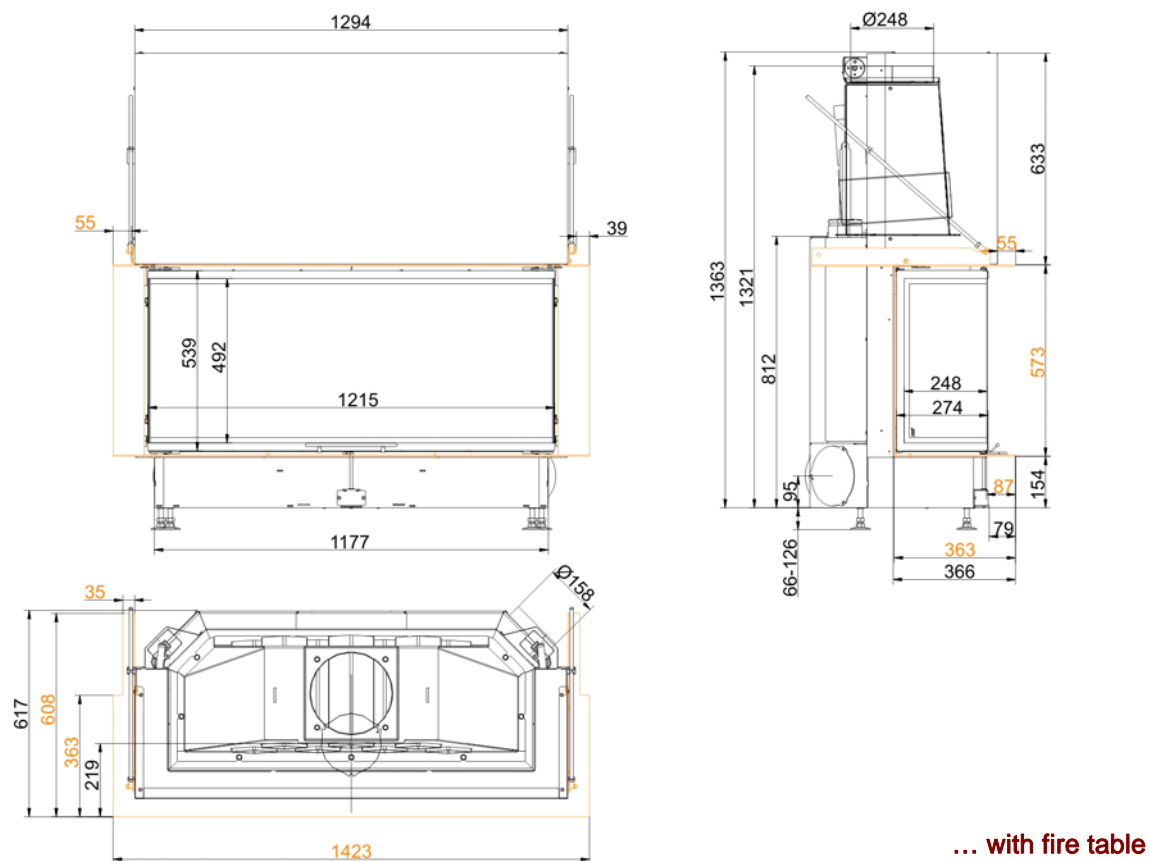
Panorama-Kamin 57/25/121/25 lifting doors (easy-lift)

State: 31.01.2014



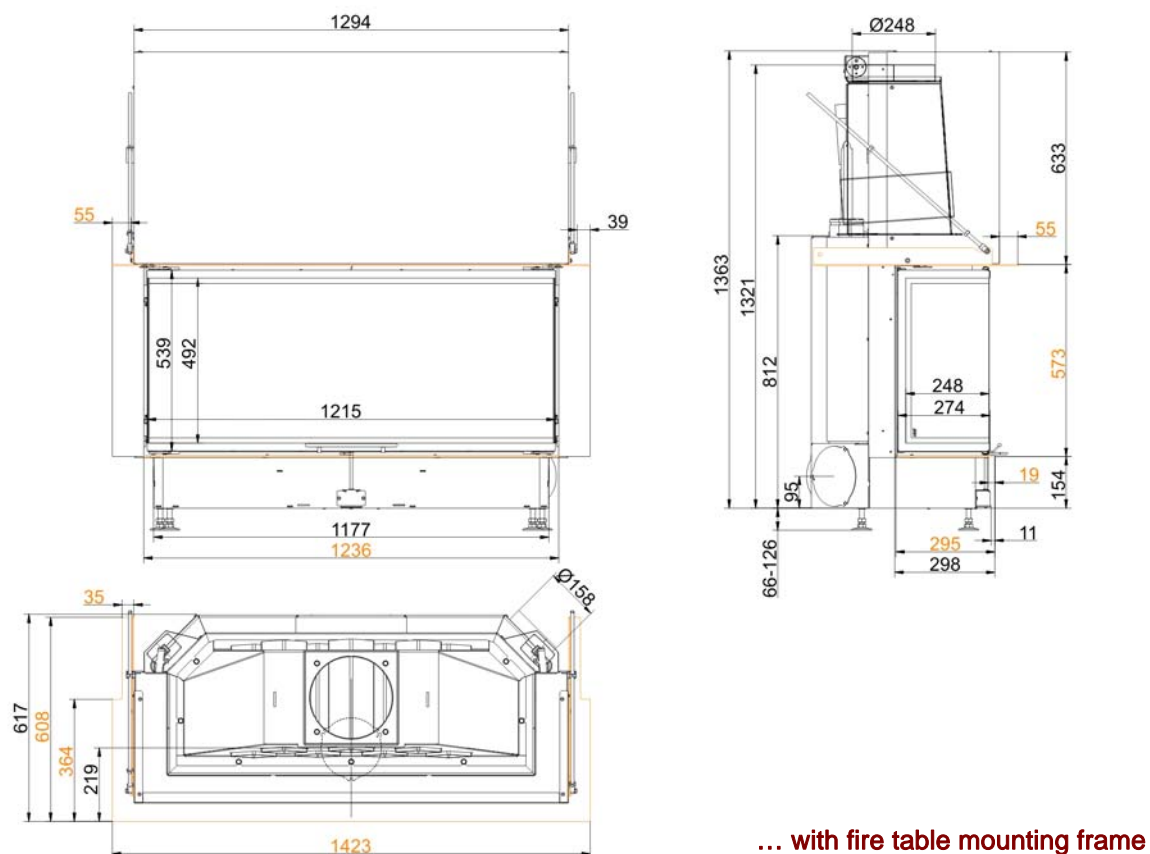
BRUNNER[®]
made in germany

Dimension sheet | **Panorama-Kamin 57/25/121/25 lifting doors (easy-lift)**

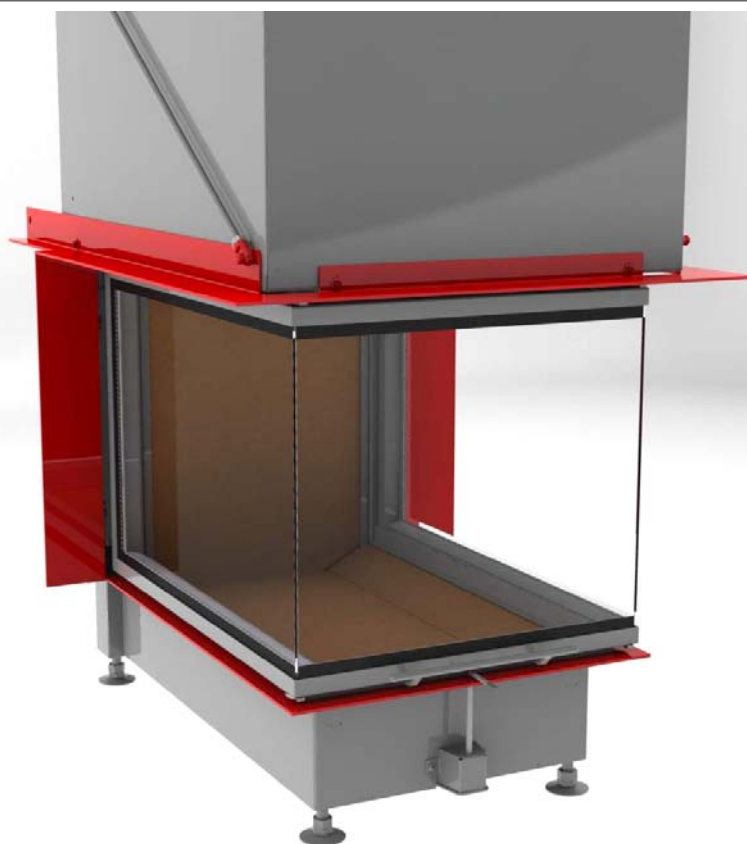


We suggest for CAD planing Palette CAD. Permanent updated drawings: www.brunner.de
Frames / front versions are marked colored.

Dimension sheet | **Panorama-Kamin 57/25/121/25 lifting doors (easy-lift)**



... with fire table mounting frame



Planning and installation

Panorama-Kamin 57/25/121/25

Tested according to

EN 13229 W

Values measured at

nominal load

Suitable for all construction types according to rules

OK

Data for functional demonstration

Rated heat power	kW	13
Firewood consumption	kg/h	4,3
Combustion performance	kW	16
Flue gas mass flow	g/s	14
Outlet temperature (before heating surface)	°C	-
Flue gas temperature after		
attached steel smoke hood	°C	210
adjoining cast iron radiator (GNF10)	°C	-
accumulation rings (MAS) ¹⁾	°C	-
adjoining ceramic accumulator ²⁾	°C	-
accumulation stones (MSS)	°C	-
water boiler	°C	-
Necessary supply pressure	Pa	12
Combustion air consumption	m³/h	40
Combustion air connection Ø	mm	160

Heat distribution

Insert / heating surface	%	50 / -
Glass (single / double)	%	50 / -
Boiler	%	-

Cross-section of gratings for max. warm air power

Supply air	cm²	1200
Warm air	cm²	1200

Minimal oven surface for closed construction type

Surface giving off heat	m²	5
-------------------------	----	---

Space inside oven chamber

Distance to oven chamber wall	cm	6
Distance to floor	cm	2

Heat insulation without / with ³⁾ air gratings

Wall	cm	10 / 6
Floor	cm	0
Ceiling	cm	16 / 14
Insulation of additional fire door DHT	cm	-
Brick lining of protected walls	cm	10

Weight

Fireplace + burning chamber	kg	288 + 85
-----------------------------	----	----------

meets requirement limit values for

Germany / Austria / Switzerland / Norway

1.BImSchV (Stufe 2) / 15a BVG / LRV / -

1) Throttle flap recommended

2) Approximate value, must be calculated eventually

3) Values with air gratings, stove casing is heat conducting

Ulrich Brunner GmbH
Zellhuber Ring 17 -18
D-84307 Eggenfelden
Phone: +49 / (0)87 21 / 7 71-0
Fax: +49 / (0)87 21 / 7 71-100
info@brunner.eu | www.brunner.eu

BRUNNER®

BRUNNER products are offered and sold only by qualified dealers and service centres.
Subject to technical and assortment changes. Errors excepted. (01/14)